

Rinnai

Sunmaster Solar Systems



Rinnai Sunmaster Solar Systems

Rinnai draws from over 70 years experience in designing and manufacturing Hot Water Systems. The Rinnai Sunmaster range of Solar Hot Water Systems has been designed specifically to make the most out of harvesting free energy from the sun with an affordable outlay.

Rinnai Sunmaster Offers:

- High quality Vitreous Enamel lined steel cylinders
- Supplied with a choice of high efficiency Collectors depending on installation location
- Available with both Gas or Electric Boost
- Wide range of components available allowing your solar expert to choose a system to meet your specific hot water needs
- Minimised heat loss and maximise efficiency
- Tanks exceed the Minimum Energy Performance Standard (MEPS)



Experience Our Innovation

Rinnai Sunmaster Solar Hot Water Systems

Range at a glance

Close Coupled Systems

A close coupled solar system is where the storage cylinder and the solar Collectors are coupled together and the installation is on the roof.

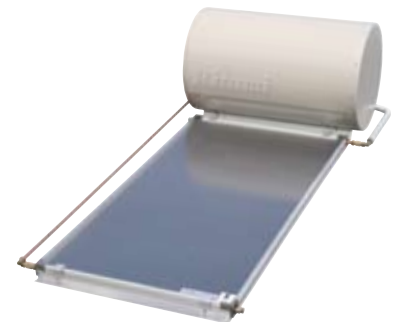
Rinnai Sunmaster close coupled solar systems use the thermo-syphoning principle (i.e. hot water rises because it is less dense) to circulate the water through the Collectors and then to the storage cylinder without the need for a pump.

Supplementary heat is available from an electric element or a Rinnai gas booster if insufficient heat is available from the sun (such as during cloudy or rainy weather or during winter months).



Features

- Low heat loss due to greater insulation
- Gas or electric booster options
- Carbon steel tank with a vitreous enamel glass lining to protect against corrosion
- Thermal Arrestor valve reduces stress on the tank by preventing excessive hot water temperature stored in the tank



Benefits

- Technically very efficient, economical to install and low maintenance
- No electricity is required to operate pumps to recirculate the water through the collectors
- Saves space on your land as there is no ground mounted tank

Split Systems

A split system is where the Storage Cylinder and the Solar Collectors are split and installed separately.

A solar control unit ensures the water circulates via a pump between the Solar Collectors and the Storage Cylinder. This transfers heat from the Collectors to the water in the cylinder if enough heat is available from the sun. An electric element or a Rinnai gas booster mounted either on a wall or on the side of the tank will boost the temperature of the solar heated water if necessary.



Features

- Streamlined appearance - minimal impact on the aesthetics of your roofline with only the Collectors visible
- Cost effective glass lined (Vitreous Enamel) cylinders
- Tall slimline tank design with a smaller footprint for minimal aesthetic Impact
- Continuous Flow Gas Booster – same technology as the Rinnai INFINITY and available in multiple sizes

Benefits

- Easy installation or conversion on rooves
- Split System Cylinder can be installed internally or externally
- Gas or Electric booster ensures that you will never run out of hot water
- Collectors and the cylinder do not need to be installed at the same time
- Split systems do not require reinforcement of the roof structure, as the weight associated with water storage is at ground level



Solar Collectors

Enduro, Enduro FTC and E-Frost Solar Collectors

- Highly efficient aluminium fin solar absorber to maximise efficiency
- Full aluminium casing for corrosion resistance
- Sunmaster systems are supplied standard with Enduro Collectors
- Enduro FTC and E-Frost Collectors have the added feature of frost protection

Note: For frost tolerance purposes - choice of Collector is determined by postcode. Please refer to your Rinnai solar specialist or visit rinnai.com.au for further details



Solar Rebates

Government Rebates

The Australian Greenhouse Office awards Small Scale Technology Certificates (STCs) formerly known as RECs, according to how much energy each Rinnai Solar system saves compared with a conventional electric water heater. The Federal Government legislation states that STCs are applicable when a solar system is installed in a new home or replaces an existing hot water system.

STCs and Rinnai Solar Systems

Rinnai offer the following popular combinations, however, if the system you require is not shown, please ask your Rinnai Solar Specialist who can further advise.

Rinnai Sunmaster				STC Zones Enduro and Enduro FTC (Enduro XL and FTC where stated) ⁽¹⁾				STC Zones E-Frost Collectors ⁽¹⁾				
Description	Size	Booster (Element position)	Collectors	1	2	3	4	1	2	3	4	
Split System Gas	System 1	175	S20	1	23	27	23	21	14	16	15	13
	System 1-XL	175	S20	1 (Enduro XL)	26	29	26	24	N/A	N/A	N/A	N/A
	System 2	175	S26	1	23	27	23	21	14	16	15	13
	System 2-XL	175	S26	1 (Enduro XL)	26	29	26	24	N/A	N/A	N/A	N/A
	System 3	215	S20	2	38	42	38	33	33	38	32	28
	System 4	215	S26	2	38	42	38	33	33	38	32	28
	System 5	270	S26	2	37	41	37	32	28	30	28	25
	System 5-SL	270 (slim line)	S26	2	36	40	36	31	30	35	27	26
Split System Electric	System 6	200	3.6kW (btm)	2	18	19	18	16	18	17	17	14
	System 6-SL	250 (slim line)	3.6kW (mid)	2	30	32	29	25	17	16	16	14
	System 7	315	3.6kW (btm)	2	28	30	26	22	17	17	16	12
	System 7-SL	315 (slim line)	3.6kW (mid)	2	30	31	28	24	17	16	16	13
	System 8	315	3.6kW (btm)	3	30	31	31	25	30	29	28	23
	System 8-SL	315 (slim line)	3.6kW (mid)	3	41	44	39	33	30	27	28	22
Close Coupled Electric	System 9	200	2.4 kW	1	18	19	18	16	Not available for use with close coupled systems			
	System 10	330	3.6kW	2	40	43	39	33				
Close Coupled Gas	System 11	200	S20	1	23	26	23	21				
	System 12	330	S26	2	38	42	38	33				

(1) STCs are subject to change. See www.cleanenergyregulator.gov.au for conditions and qualifications.

HANDY HINT

You may also be eligible for State Government rebates. To assist with the eligibility and calculation of rebates, we have produced an online calculator. Simply go to rinnai.com.au and click on the Solar Rebate Estimator icon.

The Environment

A Rinnai Sunmaster Solar Hot Water System has substantial benefits and assists with the reduction of our carbon footprint. Solar systems are awarded Renewable Energy Certificates (STCs) based on measured environmental savings. The higher the STCs awarded, the more solar savings a system offers. Rinnai systems have amongst the highest STCs in the industry.

Warranty

Rinnai Sunmaster Systems are backed with an extensive manufacturers warranty.

Solar Hot Water Systems		Solar compatible Continuous Flow Water Heaters - models S20 and S26 and other models converted by Rinnai for solar applications ⁽¹⁾⁽³⁾		Storage cylinders		Solar collectors	Components ⁽²⁾
		Heat exchanger	All other components	Vitreous Enamel (Glass) lined Sunmaster range	Stainless Steel Prestige	Enduro Enduro XL Excelsior E-Frost	
Domestic use	Parts	12 Years	3 Years ⁽⁴⁾	5 Years	10 Years	7 Years	1 Year ⁽⁴⁾⁽⁵⁾
	Labour	3 Years	3 Years	3 Years	3 Years	1 Year	1 Year
Commercial use	Parts	5 Years	1 Year	1 Year	5 Years	5 years	1 Year
	Labour	1 Year	1 Year	1 Year	1 Year	1 Year	1 Year

(1) The continuous flow models in this column are suitable only for solar hot water applications. Any failure or service issue when installed in a non solar hot water application is not covered by warranty. (2) Components include pumps, system controllers, sensors, thermostats, valves, electric heating elements and anodes where applicable. (3) Rinnai Infinity 26 Internal, HD200i, HD200e and HD250e models can be converted for solar applications by Rinnai by order request. (4) For Victorian installations only - 5 Year warranty on the solar circulating pump, solar controller and components within the continuous flow water heater in order to comply with State legislation. (5) For Queensland installations only - 2 Year warranty on the solar circulating pump in order to comply with State Government legislation where applicable.



RINNAI AUSTRALIA PTY. LTD

ABN 74 005 138 769

10-11 Walker Street Braeside VIC 3195

For further information visit

www.rinnai.com.au or call 1300 555 545

Dealer Details